

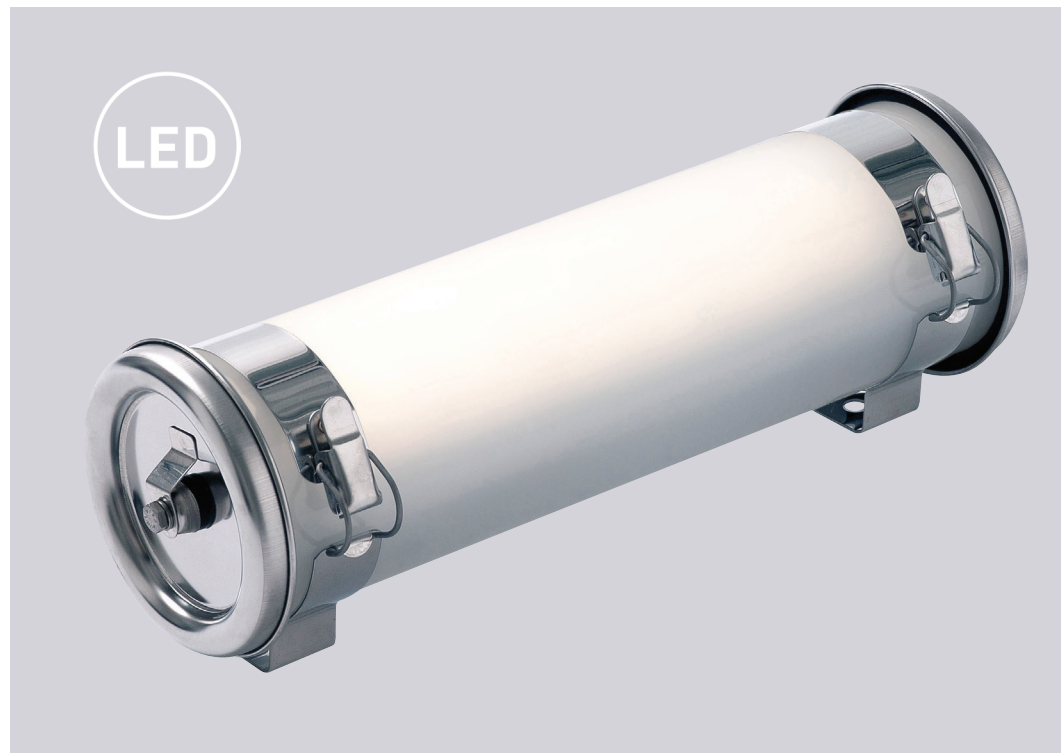


Sammode

Technical lighting since 1927

MAXWELL 100 S3H AMB

Self-contained luminaire for open area lighting
(3 hours emergency mode)



THE FOOLPROOF, SELF-CONTAINED LUMINAIRE FOR OPEN AREA LIGHTING

In addition to compliance with the requirements of standards, safety lighting in areas for production and storage in the food industry requires the use of products that can withstand the aggressive conditions that are encountered there (moisture, mechanical shock, detergents, etc.). Similarly, safety lighting in public spaces demands light fittings that meet specific constraints linked to the presence of the public, energy efficiency needs and the demand for aesthetic integration.

The MAXWELL 100 S3H AMB was designed specifically for this dual use. These products, through their simple and timeless outlines originated from their functionality alone, fit naturally into your projects.

Designed to



BE STRONG

Because the MAXWELL 100 S3H AMB range incorporates a very strong housing to meet the demands of the harshest industrial environments (IK10), we offer you products whose design is timeless. The quality of the materials and the components are guarantees of long-term investment.



RESIST HOSTILE ENVIRONMENTS

The quality of the carefully selected materials such as stainless steel or our polycarbonate is particularly suited to the aggressive environmental conditions encountered in harsh industrial surroundings.



STAY SEALED

The absolute sealing (IP68) of our self-contained tubular fittings maintains their performance throughout their life. Their tubular shape prevents external dirt being deposited. Sealed by construction, they resist high-pressure jetting.



INCREASED SERVICE INTERVALS

The MAXWELL 100 S3H AMB is a product with high strength and a long life. We guarantee our customers a return on their investment and a reduction in maintenance costs. In addition, it incorporates self-testing technology in accordance with IEC 62034, thus reducing the costs of intervention and incorporating automatic product testing.



SAVE ENERGY

The MAXWELL 100 S3H AMB includes high efficiency (lm/W) LED modules, thus decreasing lighting-related energy consumption. The chosen charging technology (NiMH batteries) ensures low power consumption.



5 YEAR WARRANTY*

Sammode embodies its commitment to the quality and sustainability of its light fittings by offering a guarantee for the MAXWELL 100 S3H AMB range that exceeds the legal warranty. A Sammode product isn't a consumable; it's an investment!

* except batteries, refer to warranty conditions

Maxwell 100 S3H AMB



EMERGENCY LIGHTING

Application	Open area
Power supply	Self-contained
Technology	LED
Emergency output	440 lm
Autonomy	3 hours

PRINCIPAL PART NUMBERS

Light output * (lm)	Designation	Part No.	Cons. (W)	T (°K)	L (mm)
STANDARD VERSION					
440	MAX100 S3H 440-840 SA 113LN	1841 0070	2,2	4000	385
ADDRESSABLE VERSION (DALI)					
440	MAX100 S3H 440-840 RD SA 113LN	1841 0080	2,2	4000	385

* Rated flux leaving the luminaire

SPECIFICATIONS

TECHNICAL FEATURES

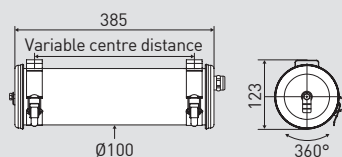
Light source	<ul style="list-style-type: none"> high-power LED modules 50 000H L80/B50 Replaceable modules
Optics	Special satinised LED diffuser
Electronic equipment	Constant current output driver
Power supply	220-240V 50/60Hz
Electrical class	Class I
Autonomy	NiMH battery with 3 hours autonomy
Test	<ul style="list-style-type: none"> Automatic tests compliant with IEC 62034 LED indication lamp on the end cap supporting the cable entry
Operating temperature	0 °C to +40 °C
Connection	Nickel-plated brass cable gland
Cable Ø	5-14 mm
Terminal block	6x2,5 mm ²
Fixing	2 spring-loaded stainless steel fixing straps
Method of construction	<ul style="list-style-type: none"> Single-piece housing with high mechanical resistance Long-term sealing maintained by axial screwing

MATERIALS

Diffuser	Polycarbonate
End caps, fixing straps, etc.	304L stainless steel
Gaskets	EPDM

STANDARDS

Sealing	IP68
Shock resistance	IK10
Fire resistance	960 °C
Compliant with	EN 60 598-1, EN 60598-2-22
Type	Maintained and non-maintained



KEY FEATURES

- Infrequent maintenance
- Resistant to detergents
- Durable and maintainable luminaires



OPTIONS

FINISHINGS

End caps and fixing straps in 316L MR stainless steel

FIXINGS

Reinforced spring-loaded fixing straps BRS

Fixing straps with HSHC screw* BAV

Fixing straps reinforced with HSHC screw* BRV

[* Tamper-resistant Torx screw on request]

ACCESSORIES

Spacers (5 or 20 cm) for fire safety standards



Sammode
Technical lighting since 1927